

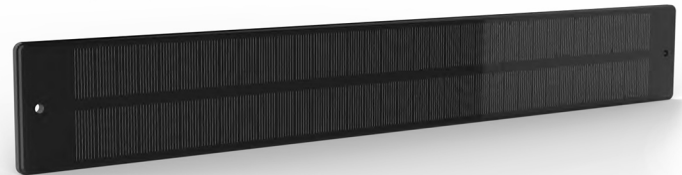


Environment-friendly
& Energy-saving



Classic Product
Solar & Sensor Solution





AC605-01 Solar Panel

It is made by monocrystalline silicon with simple design, small size, light and easy for installation, high light-to-electricity transferability is good for charging lithium battery products.

Features

- ❖ Light-to-electricity transferability is over 19%
- ❖ Pouring sealant for production, anti-UV material for cable
- ❖ Adhesive tape or screw type installation for optional

Size



Model	Rated Power	Rate Voltage
AC605-01	3.5W	18 V



AC603-01

Battery and Receiver Built-in Solar Panel

Features

AC603-01 Solar panel integrated amorphous silicon solar panel, rechargeable lithium battery, remote control receiver, is suitable for all AM35 and below AM35 DC tubular motors

The main advantage of amorphous silicon solar panels is that they can also generate electricity under weak light conditions. The external solar panels or battery wand are used for power supply, which can be applied to places with inconvenient power supply. There is no need for additional cables, which can save construction costs and effectively solve the problem of no pre-reserved power supply. The conversion of solar energy into electric energy is environment friendly and energy saving, to achieve the recycling of resources.

Parameter

Model No	Built-in lithium battery	Power of solar panel	Voltage of solar panel	RF receiver frequency	Modulation
AC603-01	8.4V/2600MAH	1.5W	12V DC	433.92MHz	ASK



AC601-01

Solar Panel

Environment friendly and energy saving is an important symbol of modern low-carbon intelligent life. AC601-01 adopts amorphous silicon material, which can convert weak light into electric energy, suitable for indoor use. It can work with AM25 lithium battery motor series.

Features

- Simple and fashionable appearance, beautiful and generous;
- PVC film packaging process of amorphous silicon panels;
- Aluminum alloy frame with high strength, strong resistance to mechanical impact;
- Easy installation, optional glue installation and screw installation, flexible and convenient.

Parameter

Model No	Power	Open circuit voltage	Short circuit current	Working Voltage	Working Current	Battery chip size	Test Condition
AC601-01	1W(±5%)	18V	0.095A	12V	0.08A	375 x 50(±0.3) x 3.2mm	AM1.5, 1000W/m ² , 25°C



AC302-01 Solar Power Radio Wind/Light Sensor

Features

- ◆ Powered by solar panel, energy saving and environment-friendly;
- ◆ UV resistance housing, suitable for outdoor application;
- ◆ Flexible structure design for wind sensor part to ensure the high sensitivity;
- ◆ Auto checking the wind, light value transmitting to main controller for proper function;
- ◆ Available to set the sensitivity according to the weather or climate, flexibility in setting the wind level and light intensity and the amount of rain to achieve optimum conditions;
- ◆ 1-9 levels setting for wind, light and rainfall situation;
- ◆ When sun ray intensity reaches the set value, the awning will automatically open;
- ◆ When wind intensity reaches the set value, the awning will automatically close;
- ◆ Compatible with all kinds of A-OK control system;
- ◆ Suitable for electric awning and electric shutter and others.



Parameter

Model No	Working Voltage	Working Temp	Frequency	Transmit Power	IP Class	Modulation
AC302-01	Solar panel + DC 3.7V lithium battery	-20°C ~ +55°C	433.92MHz	≤10mW	IP55	ASK

AC302-02 AC Power Supply Radio Wind/Light Sensor

Features

- ◆ UV resistance housing, suitable for outdoor application;
- ◆ Flexible structure design for wind sensor part to ensure the high sensitivity;
- ◆ Auto checking the wind, light value transmitting to main controller for proper function;
- ◆ Available to set the sensitivity according to the weather or climate, flexibility in setting the wind level and light intensity and the amount of rain to achieve optimum conditions;
- ◆ 1-9 levels setting for wind, light and rainfall situation;
- ◆ When sun ray intensity reaches the set value, the awning will automatically open;
- ◆ When wind intensity reaches the set value, the awning will automatically close;
- ◆ Compatible with all kinds of A-OK control system;
- ◆ Suitable for electric awning and electric shutter and others.



Parameter

Model No	Working Voltage	Working Temp	Frequency	Transmit Power	IP Class	Modulation
AC302-02	AC230V 50/60Hz AC120V 60Hz	-20°C ~ +55°C	433.92MHz	≤10mW	IP55	ASK



AC131-01 Light Sensor

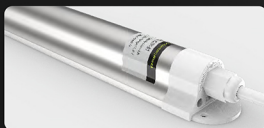
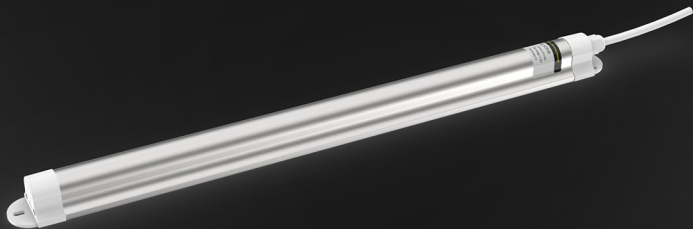
The solar panel on the back is energy saving and environment friendly. While using the battery can also be charged to ensure that the light sensor will never lose power. Compatible with all A-OK products. With manual control button, support all functions of the handheld remote functions.

Features

- ✦ Built-in solar panel, energy saving and environment-friendly, while using the battery can also be charged;
- ✦ USB port for recharging from electricity charger;
- ✦ Vibration detection with warning helps to remind user to check their window for safety;
- ✦ Power ON/OFF design to save battery;
- ✦ Testing mode and working mode for optional, testing mode is mainly for demonstration;
- ✦ Summer mode and Winter mode for optional;
- ✦ Compatible with all A-OK radio receivers

Parameter

Model	Battery Capacity	Rated Current	RF Frequency	Transmit Power	Recharging Voltage	Modulation	Charger	Recharging Port
AC131-01	150mAh/3.7V	<10uA	433.92MHz	<10dBm	DC5V	ASK	5V/1A	Micro USB



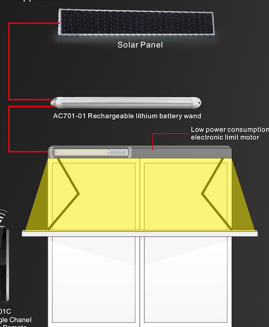
AC701-01 External Lithium Battery Wand

Rechargeable lithium battery wand, with built-in lithium battery, is convenient for charging. It is mainly used with solar panels and DC motors.
Compatible with all A-OK receiver system.

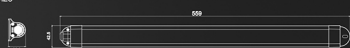
Features

- ✦ Mainly work with solar panel, AM35 DC tubular motor;
- ✦ Built-in 14.8V 4400mAh lithium battery, can cycle charge and discharge 500 times;
- ✦ Charged by electricity charger or solar panel;
- ✦ It will take 6 hours for charging fully;
- ✦ Full charged supports 160 times of motor running;
- ✦ IP65 waterproof, suitable to install outside.

Application



Size



Parameter

Product Model	Working Voltage	Working Current	Capacity	Working Temp
AC701-01	DC 14.8V	7A	4400mAh	-20°C ~ +55°C

AC160-01C
Hand-held Single Channel
Screen Touch Remote



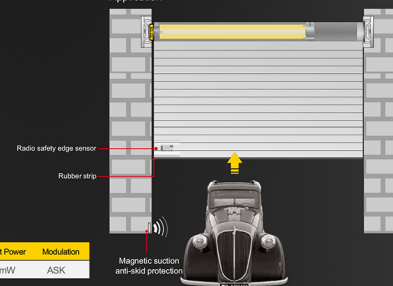
AC124-01 Radio Safety Edge Sensor

Exquisitely shaped, the device is connected with the rubber strip inside the bottom beam of the garage door. When the garage door encounters obstacles in the process of moving down, the rubber strip transmits the signal to the sensor, and the sensor automatically transmits the signal to the main controller, so that the garage door stops and then retracts automatically.

Features

- ✦ Exquisitely shaped;
- ✦ Waterproof design, IP65 Class;
- ✦ Anti-pry protection function;
- ✦ Rebound/stop is optional;
- ✦ Low voltage alarm;
- ✦ Compatible with all A-OK radio receivers;
- ✦ CR2032 button battery, easy to install and purchase;
- ✦ Ultra low standby power consumption design, the battery life can be up to 2-3 years

Application



Parameter

Model No.	Battery Model	Working Temp	RF Frequency	Transmit Power	Modulation
AC124-01	CR2032(3V)	-20°C ~ +55°C	433.92MHz	≤10mW	ASK